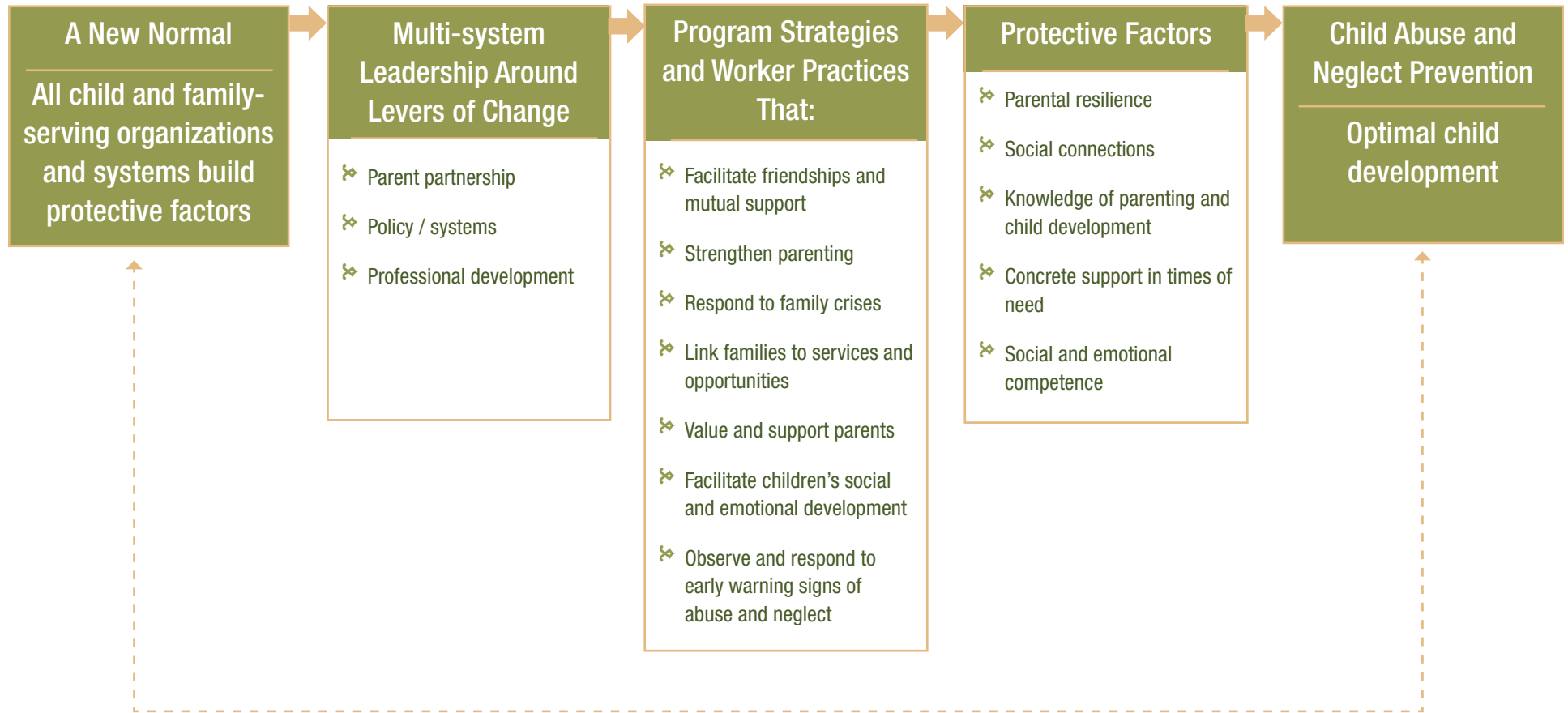


# Strengthening Families Logic Model

How policies, programs, and practice can prevent child abuse and neglect and promote optimal development.



The study that resulted in the identification of the Protective Factors was conducted by the Center for the Study of Social Policy (CSSP) and was funded by the Doris Duke Charitable Foundation in 2001. CSSP and the National Alliance of Children's Trust and Prevention Funds continue to provide national leadership around the Strengthening Families approach.



[www.ctfalliance.org/collaborativeprojects](http://www.ctfalliance.org/collaborativeprojects)